



BC Log Builders & Timber Framers NEWSLETTER



In This Issue

Who We Are	2
What We Do	2
BCLTBIA Membership Benefits	2
Updates & Reminders for a New Accounting Year	4
Board President Message.....	5
Fibre Supply Update	5
BC Timber Sales' Category 4 – Value-added Program Update	6
Sansin Corporation Announces Ivory Its 2025 Color of the Year	7
Sansin Adds 10 New Locations to Its Dealer Network in North America	7
Pre-framing Roof and Wall Panels on Site.....	8
Exciting Updates from the Log Building Association of New Zealand (LBANZ)	10
BCLTBIA's Building Code, Energy and Carbon Committee Update.....	11
Wood You Believe It? Tax Credits for the BC Wood Industry to Grow Green.....	12
4 Steps Employers Can Take to Reduce Winter Driving Risks	14
BCLTBIA Classified Ads and Notices.....	16
BCLTBIA Resource Section	18

Building Knowledge by Association 28th Annual AGM & Conference

We are excited to announce the 2025 BCLTBIA 28th Annual Conference March 6 - 9, 2025. The feedback for last year's venue/location was very positive, so we will see you once again at the Prestige Harbourfront Resort in Salmon Arm this March. This family friendly location, with preferred resort rates a few days pre and post conference, will give you the opportunity to extend your stay to take in the beautiful surroundings. The conference registration packages will be available on our website in early January. Conference fees will be offered at 2024 pricing, with an additional Early Bird Discount for those registering by January 31, 2025. Watch for updates on our website!

With the Schedule of Events being polished off, you can still have the opportunity to contribute your ideas for conference content. We want to hear from you. This is your Association. Why attend a conference? The question is more why would you not? These annual events are a great opportunity for everyone involved in the industry, from the owners to the employees and their families.

28th AGM & Conference... continues on page 3



BCLTBIA Newsletter

Winter Issue – 007-2024/25

© 2024 BC Log & Timber Building Industry Association
 #116, 5100 Anderson Way #420
 Vernon, BC V1T 0C4
 Phone: 250-545-5647 (LOGS)
www.bclogandtimberbuilders.com
 Catherine Hansen, Executive Director
bcltbia@gmail.com

CONTRIBUTORS TO THIS ISSUE

Aria Hahn
aria@hellopocketed.io

Paula Hughes
paulahughes@panabode.com

Susan Lee, Msc. F, RPF - BCTS
Susan.Lee2@gov.bc.ca

Lindley MacLeod, RPF - BCTS
Lindley.MacLeod@gov.bc.ca

Rumin Mann
rmann@bcwood.com

Kelly Marciniw
kelly@ZTFrames.com

Peter Sperlich
canadianpridelt@gmail.com

Toni Strawbridge
secretary@logbuildingnz.org.nz

Gord Woodward
gwoodward@roadsafetyatwork.ca

Sam Zirnhelt
info@ZTFrames.com

SUPPORTING OUR UNIQUE BUILDERS

Our seasoned Log Builders and Timber Framers all share one thing in common: a true passion and dedication to their craft. They have recognized the benefits of integrating traditional methods with computer-cutting technology and continue to embrace new technologies moving forward.

BC LTBIA Newsletter
bcltbia@gmail.com 250-545-5647 (LOGS)
 Editor: Catherine Hansen
 Design Layout: Cameron Luckock

Contributions and advertising DEADLINE for next issue is March 1, 2025

BC LTBIA Newsletter welcomes advertisers. Our Newsletters are a great way to connect the best builders and suppliers for our industry. Newsletters mailed to members & posted online.

Who We Are

The BC Log & Timber Building Industry Association (BCLTBIA) is a self-funded organization dedicated to improving business opportunity, craftsmanship, and profitability for British Columbia's log home and timber frame building industry.

What We Do

Founded in 1997, the BCLTBIA has made access to suitable wood a top priority. British Columbia's wealth of world-class timber is as varied as it is renowned. As great admirers of this renewable resource, our builders understand that no two logs are alike. From coastal timber to high-elevation cedar, they know the characteristics of each timber type, and always use the highest-quality raw materials – no matter the project.

In part, we strive to represent the industry to all levels of government, and carry out regular volunteer efforts on behalf of our members. Additionally, we seek to improve education and awareness by promoting timber framing and log building to young people, as well as encouraging experienced builders to provide mentoring and on-the-job training.

BCLTBIA Membership Benefits

- Excellent networking and contacts
- Online profile on our website with 4 photos displayed and hotlinks to your website & email
- Use of the Bulletin Board online
- Opportunity to contribute to our quarterly newsletter
- Use of BCLTBIA logo in your advertising
- Access to Members Only Resources including:
 - The Licence of Energy Data (contact office for fee structure)
 - Health and Safety Manual template
 - The Contractor's Manual template
- Discounted rate for attendance at our conferences and workshops, which offer access to training and presentations on items related to your business.
- Opportunity to join a current committee. Refer to page 18 the Resources section "Joinery at its Finest"



28th AGM & Conference.... continued from page 1

Along with the hands on workshops and tool demonstrations, AGM, and the Auction there will be sessions on: Fire Safety, Code and Performance, Tax Credits, Health and Safety, Insurance, Staff Retention and Training, Fibre Access, Marketing Strategies, Dietrich’s training, Black Smith Demonstrations, and so much more. New this year we will be pushing the limits of your craftsmanship and engineering to the test, with on-site testing and engineering post analysis, with Maik Gehloff. Stay tuned for further details. What your association offers through these conferences is a network to ensure you have access to what is needed to continue to broaden your opportunities in this industry. **Whether it is for the presentations, to**

connect with our industry suppliers, or face-to-face contact with your industry peers, your attendance is an investment in your business and your future.

To book your room, you may call the Resort directly at (250) 833-5800. Please let them know you are with the BCLTBIA conference to receive preferred rates. To see what this facility has for amenities visit them at: <https://www.prestigehotelsandresorts.com/locations/salmon-arm/overview/>

We look forward to spending time with you at Shuswap Lake. Please feel free to invite your family, your employees and their families. This is your opportunity to connect and network with others who carry similar passions for our trade. See you soon!



Our Newsletters are a great way to connect with the best builders and suppliers for our industry.

Updates & Reminders for a New Accounting Year

Paula Hughes | paulahughes@panabode.com

EMPLOYER CONTRIBUTIONS TO EI & CPP

For 2025 the EI rate is 1.64%, which is generally matched at 1.4 x by the employer calculated on earnings up to \$65,700. The 2025 CPP rate remains at 5.95% with a 1:1 employer contribution on earnings up to \$71,300, the first \$3500 of which are CPP exempt.

ADDITIONAL CPP2 STARTED IN 2024

After reaching the maximum contributory earnings of \$71,300, you will be subject to an additional deduction of 4% on earnings up to \$81,200 for a maximum additional contribution of \$396.00. As with regular CPP, the employer is required to match this amount 1:1.

T4 FILING

Best practice for successful T4 filing is to complete a PIER (Pensionable & Insurable Earnings Review) on the final 2024 payroll. You can confirm the total CPP and EI deductions are correct by using the assigned rates to calculate the expected contributions based on annual earnings, and manually correct the cheque if necessary to ensure the deductions are correct and avoid a CRA PIER review.

2024 T4s must be filed with CRA and distributed to employees by February 28, 2025.

EMPLOYER HEALTH TAX

If you are registered for Employer Health Tax you will have paid installments in June, September, and December. You will need to file the annual return based on your total payroll as per your filed T4 summary and pay any balance by March 15.

WORKSAFE BC PREMIUMS

These rates vary for each business depending on experience and claims ratings, and applies to gross earnings up

to \$121,500 per employee. You should have received communication from Worksafe with your 2025 rate. Annual returns are due by February 28, 2025.

REMINDER

All expenses relating to 2024 payroll, including Worksafe premiums and Employer Health Tax, should be recorded prior to filing your December 31 year end to keep payroll costs accrued in the correct period.

If necessary, make sure you update your payroll software prior to processing your first January payroll so the new tax tables are implemented as you start your new year.



JJS
Votre source de solutions
Your Solution Partner

1899-2024
125
mafell
Mafell

CAPTURE & WIN!

Submit a photo of you with your favourite Mafell power tool and get a chance to win one of two prize Mafell vouchers!

First Prize **\$12,500**

Second Prize **\$1,899**

125-years.mafell.com/ca

*Contest ends Dec 31, 2024. No purchase necessary.

NFU50 NOW AVAILABLE



Cutting depth 50mm
(1-15/16")

Suitable as a skew notch
and tenon cutter

Lengthwise grooves

jjscanada.ca

24070

Board President’s Message

Sam Zirnhelt | info@ZTFrames.com

Best wishes from all of us on the BCLTBIA board for a restful holiday and for renewed energy to tackle 2025! We now have a full year under our belt with Catherine as our Executive Director. It’s been a big boost for the organization. We’ve had very successful conferences and fundraisers but more importantly, significant growth in our membership. This adds to our capacity to work on issues critical to our industry. It also enhances our ability to influence and engage with government and industry related groups. I hope you’ve all enjoyed the newsletter this year – again more than a little of Catherine’s effort reflected here. We’re making a push to have more members (in addition to directors) get involved in various committees. Some of the key areas we continue to work on include: Energy Code, Worksafe (e.g. OHSPs), marketing (e.g. Global Buyers Mission) and fibre supply (e.g. BCTS Category 4). A special thanks to all of the directors for stepping up and helping move our industry forward. Happy Holidays everyone!

Fibre Supply Update

We continue to engage with BCTS regarding the new BCTS Category 4 (Value-Added) program. I believe it is the view of the vast majority of our members that the program is far from ideal for our industry. In addition to attending dozens of meetings (online and in person), we have had workshops directly with BCTS staff at each of our last two conferences. Our key recommendations, however, did not make it into the legislation and there seems to be little appetite or ability to make changes at the policy level. We will continue to work on this as it is critical to the operation and future value of many of our businesses. This will be a topic at our 2025 conference. A good news story at least in the Cariboo Region – the Likely-Xatsull Community Forest (one of the originals) has been offered a 10,000 m3 expansion and the Community of Big Lake has been offered 10,000 m3 for a new Community Forest. If you know of similar positive stories from other regions please share them with us.

F3 TIMBER TECHNOLOGIES
CONSTRUCTABILITY AT WORK

604.330.0993 form.fit.function@f3timbertech.com

Screws Connectors Rigging Bracing Innovation Tools

schm/d schrauben SHERPA pewag STEDOX F3 Timber Tech FISCH

Our Newsletters are a great way to connect with the best builders and suppliers for our industry.

BC Timber Sales' Category 4 – Value-added Program Update

Susan Lee | Susan.Lee2@gov.bc.ca

Lindley MacLeod | Lindley.MacLeod@gov.bc.ca

The transition year between BC Timber Sales' Category 2 and Category 4 – Value-added program is ending on December 31, 2024. BC Timber Sales encourages you to submit your application as soon as possible. Applications from current Category 2 registrants received before December 31, 2024, will have their performance history forwarded to the new program. Applications received on or after January 1, 2025, will be considered entirely new, with no performance history forwarded.

During the transition year, 31 value-added producers have registered in the Category 4 – Value-added program so far. An additional 42 producers have undergone a site visit, a requirement of the registration process, which will streamline the processing of their applications. Since January 2024, BC Timber Sales has advertised 361,527 m³ of timber in Category 4 – Value-added timber sale licences across the province. BC Timber Sales is working on sales plans for the upcoming year and is still targeting offering 10 per cent of its allocated fibre supply in

Category 4 – Value-added timber sale licences 2025.

Three BC Timber Sales Value-added Committees (North, South and Coast) have been formed to encourage relationship building between Category 4 – Value-added registrants and BC Timber Sales' local Business Areas. The committees are online meetings which are a forum for communication and awareness about the program, with an emphasis on Timber Sale Licences. If you are a current or prospective Category 4 – Value-added registrant and you have not received a committee meeting invite, please reach out via the contact information provided below.

If you would like more information about the program, please visit <https://www2.gov.bc.ca/gov/content/industry/forestry/bc-timber-sales/category-4-value-added>. Registration applications and requests to receive invites to the committee meetings can be sent to BCTS.ValueAdded@gov.bc.ca.

BC Timber Sales thanks the BC Log & Timber Building Industry Association and its members for the continued interest in the program and wishes everyone a safe and happy holiday season!

Protect your logs with performance wood treatments from Sansin.

A log home requires more than protection from sun and rain. Sansin Classic 1-2-3 is the ultimate finish for logs and big timbers – easily maintained and keeps wood beautiful for decades.

This low-lustre three-coat penetrating formula not only enhances the natural beauty of wood, but it also allows it to breathe.



SANSIN® 1-877-SANSIN-1 | sansin.com



The Sansin Corporation Announces Ivory Its 2025 Color of the Year

Strathroy, Ontario, Canada – December 9, 2024 – The **Sansin Corporation**, a global leader in environmentally friendly, high-performance wood protection, is pleased to announce Ivory 21 as its 2025 Color of the Year. **Ivory is an earthy, organic soft white with neutral undertones that enhances the natural beauty of the wood grain** and brightens up any space. Ivory is a versatile color that complements many aesthetics – from coastal tranquil to Nordic minimalist, timeless traditional and many more.

“Natural, translucent colors like Ivory are trending as homeowners, builders, and architects seek durable finishes that protect the wood while highlighting its personality and allowing the character of the wood to shine through,” said Sjoerd Bos, Sansin’s Managing Director. “Ivory can be used to create a serene space on various species of wood with a range of undertones.”

Bos added that Ivory is available in several of Sansin’s environmentally friendly and low VOC premium wood protection systems, including:

Purity Glacier, a crystal-clear finish for high-wear interior wood surfaces

Purity 0-VOC Stain, a penetrating gel stain for wood interiors for interior settings

SDF, an exceptionally versatile protection for siding, logs, decks and fences

ENS, a durable two-coat finish that can be applied to virtually any surface, from windows, doors and railings to siding and decks – and even to improve the performance of other coatings.

Ivory can also be formulated for use in Sansin’s Precision Coat line, which is designed for use in a factory finish setting to achieve standardized production quality.

“Ivory is a beautifully subtle and understated color that enables the natural wood tone that so many of our customers are looking for,” explained Adam Bartlett, Sansin’s Color Specialist. “It can be accented with a range of the dark or light hues in Sansin’s color palette, and it looks particularly great on wooden ceilings.”

To learn more about Ivory, the Sansin 2025 Color of the Year, go to <https://www.sansin.com/color/sansin-color-of-the-year-2025/>.

Sansin Adds 10 New Locations to Its Growing Dealer Network in North America

The Sansin Corporation, which has developed environmentally friendly, high performance wood protection for more than 35 years, has added 10 businesses across the U.S. and Canada to its growing network of distribution locations.

“These companies have invested in Sansin’s complete wood care product line and committed to properly training their staff to be Sansin color specialists and knowledgeable wood coating professionals for their discerning clientele,” said Margaret Bos, Director of Retail Sales. “Adding these locations to our dealer network makes getting high quality, low-VOC products that contractors and DIY customers need to protect their wood projects more accessible.”

To see the list of newest companies that have selected Sansin as their premium wood stain offering, go [here](#). To locate a Sansin dealer near you, go to www.sansin.com/dealer-locator/. To learn more about Sansin products, visit www.sansin.com.

About Sansin

For more than 35 years, Sansin has been the only wood protection company focused exclusively on researching and developing environmentally friendly, water-borne interior and exterior wood products and technologies that deliver outstanding color, durability and performance without the toxicity found in conventional stains. Sansin wood treatments, finishes and preservatives use water, not petroleum solvents, to deeply penetrate and protect wood naturally, from within. Headquartered in Ontario, Canada, Sansin has offices in the Netherlands and Rhode Island and dealer locations in Canada, the U.S., Europe and Australia. To learn more about The Sansin Corporation, or how to become a Sansin preferred dealer, visit www.sansin.com.

Pre-framing Roof and Wall Panels on Site

Peter Sperlich | canadianpridelt@gmail.com

In this article, we're going to discuss possible options to pre-frame some or all of your exterior framed walls and roof panels. Since your log or timber package is being assembled by your crew and crane, you can take advantage of your crane proximity. This can speed up the entire process which saves costs. However, the biggest benefit may actually be minimizing and managing risk on the job site.

About two decades ago, I started hearing a considerable amount about factory-built housing. It was predicted that the whole construction industry was going to move over to this type of construction. Mobile homes have been around for many decades, doing just that. Those of us handcrafting log homes have also been factory building houses for decades by prefabricating buildings in our log yards, disassembling the finished log work, and then shipping and reassembling the project at our client's building site. So nothing that new to log builders right!

In my opinion there isn't always a right or wrong way to build. We will always see a mixture of both factory built and site-built housing. To what extent will this be dictated by the uniqueness and location of each site and structure, along with the companies and people involved? Certainly, the higher standards that are expected in each building code revision and step does continue to have an affect on this process as well. There is no question that building a product in a fixed location, such as a factory style setting, lends itself to a higher quality product!

In the last couple of decades, many log and timber building companies have certainly adapted and created production facilities to pre-build wall, roof and floor systems. The entire Mass timber industry is revolving around the idea of Cam/Cad design and cutting!

There are however, options to pre-build some of your wall and roof components at the building site. Since not every project is conducive to an entire factory build, this could provide an opportunity that may work for some of your projects. It could be your own crew that does the work or it could be a competent contractor. It is also vital to have excellent building design capabilities, along with great communications,

as we know that things can and will change!

In our case, we had a log shell produced at our log building yard. We specialize mainly in log shells, so our production does not typically include framed wall or roof packages. For this particular project, we had considerable wall height and steep roofs in the design. It was not a very simple project to frame in situ! We, therefore, decided to pre-frame all of our gable walls and roof panels in sections on the finished floor at the building site. Essentially, we framed the floor up well ahead of the log package arrival date. We then waterproofed the floor so it could withstand the additional weathering.

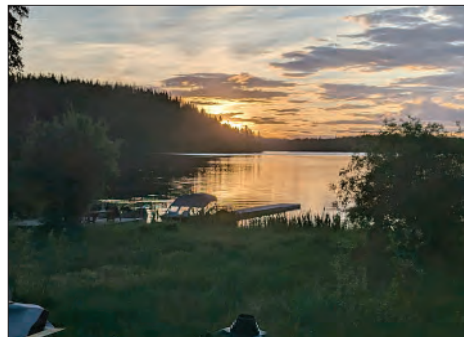
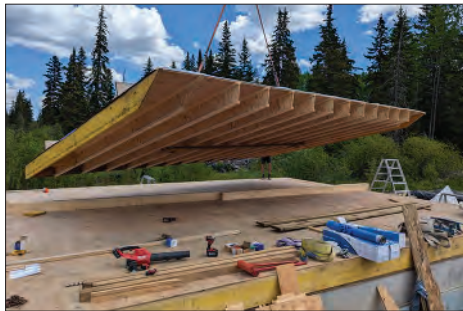
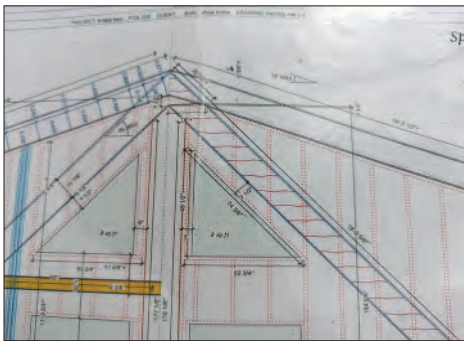
Next, we laid out our gable ends and dormer walls based on our 3D Dietrich's modelling of the project. We would lay out on the floor each wall, frame and sheathing each of the 2 x6 walls, and then lift them to the side. We went through the same process with all the roof panels. We were able to pre-frame each roof panel starting with the largest and stacked them on top of each other on the floor, again using I-joists and sheathing. This also made layout easier as the joist spacing was already on the panel below! In addition, we added peel and stick membrane to waterproof each roof section.

The roof panels proved to be the trickiest to lift. They required strongbacks attached on top and an additional lifting support from the underside. If you haven't done this before I would recommend that you consider consulting an engineer. It is also important to ensure your crane has the appropriate capacity and lifting devices, such as spreader bars and multi point rigging. Moving the roof panels from the floor to beside the project, proved to be an excellent test for the safety and usefulness of our rigging techniques. By only lifting them a foot or so off the floor, we were soon able to establish if we were able to safely move and manipulate each piece later, when it actually had to go up on the house.

When the time came to assemble the log project, the log shell was assembled in a couple of days and the gable ends and roof panels added another day or so to the assembly. It was, however, quite impressive to go from a framed crawlspace floor to a project with walls and a roof in a matter of less than a week. My

Pre-framing Roof and Wall ... continues on page 11

Pre-framing Roof and Wall Panels on Site



Our Newsletters are a great way to connect with the best builders and suppliers for our industry.

Exciting Updates from the Log Building Association of New Zealand (LBANZ)

Toni Strawbridge | secretary@logbuildingnz.org.nz

My husband and I have taken on new roles within the association. I've been appointed as the Secretary, while my husband now serves as President. In addition, I've been honored with the role of Editor for our LBANZ newsletter, which has kept me very busy but is also incredibly rewarding. I'm looking forward to continuing to build relationships with log builders across the globe and learning more about the incredible log homes being created in other countries.

As part of our efforts to keep our newsletter fresh and inspiring, I'm excited to introduce a new feature: the International Spotlight. This section will highlight outstanding log building companies from around the world, showcasing their craftsmanship, innovative designs, and exceptional log homes.

Do you have a standout log building company that deserves to be in the spotlight? If so, I would love to feature your business in an upcoming issue. Please don't hesitate to reach out to me at secretary@logbuildingnz.org.nz for more information. I'm currently working on my third newsletter, and I'm thoroughly enjoying uncovering and sharing these exciting stories.

In our next edition, I'll be sharing a fascinating story about the very first log building course held in New Zealand in 1984, which ultimately led to the formation

of LBANZ. None other than B. Allen Mackie was the tutor for that pioneering course, and it promises to be a fascinating read—keep an eye out for it!

We are busy organizing our annual Log Building Course, set for March 2025. With 7 students already signed up, we're excited to continue this educational tradition. The course, which has been running for many years, is taught by Graeme Mould from Natural Log Homes. It's a hands-on, 13-day course that covers everything from the basics to more advanced log building techniques. The course has proven to be extremely popular over the years, with an average of 6 students attending each year. There is a clear and growing interest in log homes, and it's exciting to see the next generation of log builders eager to learn.

In addition to the course, we also have our Annual General Meeting (AGM) and conference coming up in May/June 2025. This year's conference will be held in Twizel, where we'll tour the area's stunning log homes and enjoy some of the fantastic local cuisine. It's always a wonderful weekend filled with learning, networking, and celebrating the craft of log building.

Being part of the international log building community has been an incredibly rewarding experience. I feel proud to represent New Zealand, which, though small in comparison to other log building regions, has so much to offer.



Our group photo from our last AGM.

BCLTBIA's Building Code, Energy and Carbon Committee Update

Kelly Marciniw | kelly@ZTFrames.com

The BCLTBIA's Building Code, Energy and Carbon committee held a couple of learning sessions this year and has successfully been licensing the R-value testing results. We will also have a code and performance related topic at the upcoming March conference – please share any speaker or topic suggestions you may have!

This year, one of the sessions for members was on mechanical systems by Nigel Porter of Shape Energy (a BCLTBIA member) and the other was at the BCLTBIA Conference on energy and airtightness by Mark Bernhart of Bernhart Contracting. Plans are underway for a log & timber building focused workshop on BC Building Code by a trainer from BC Canadian Home Builders Association (BC CHBA); this will take place in 2025.

Other big news this year is the official licensing of the NRCAN BCLTBIA R-value testing that was done for Western Red Cedar and Doug Fir log wall assemblies; this provides a higher value when calculating the insulation of log walls compared to ICC400 standard tables. We have now had multiple members license the results for modelling their projects; thus increasing the ability to meet code requirements without increasing log diameter size. (To get your license and start using it on projects, visit: www.bclogandtimberbuilders.com/resources/license-new-

[log-wall-insulation-values](https://www2.gov.bc.ca/assets/gov/farming-natural-resources-and-industry/construction-industry/building-codes-and-standards/bulletins/20_better_ee_zcsc.pdf)). Also, remember that in BC since May 2023 that log homes have an alternative pathway for meeting energy efficiency requirements (see: https://www2.gov.bc.ca/assets/gov/farming-natural-resources-and-industry/construction-industry/building-codes-and-standards/bulletins/20_better_ee_zcsc.pdf). Combining these two resources makes it much easier to have log home projects meet permit requirements and saves the additional material and detailing costs that would otherwise be required.

For those building higher performance homes (Steps 4, 5 and beyond), a heat pump continues to be a key piece of mechanical equipment. With more cold-climate heat pumps becoming available, there is an increasing ability of projects in colder climates (ie outside of the islands and south coast!) to meet both low operating carbon and high energy efficiency targets – while also staying warm on those wicked cold days. To help select the right heat pump for your project, a new tool by NRCAN was released earlier this year. NRCAN's Air Source Heat Pump Sizing & Selection tool can be accessed here: <https://natural-resources.canada.ca/maps-tools-and-publications/tools/modelling-tools/toolkit-for-air-source-heat-pump-sizing-and-selection/23558>.

Happy holidays and wishing you all a warm and cozy 2025.

Pre-framing Roof and Wall ... continued from pages 8, 9

neighbours were equally impressed that we could put this building together so quickly.

I am not advocating that this is the way that all structures should be assembled, but wanted to offer this up as a demonstration for an option to minimize risk at the building site. Building on the floor increased the speed of production and provided a slightly higher standard than trying to frame these high up in the air!

In the next newsletter, I am going to look at some of the ways that we have utilized modern and ancient building technologies to achieve better air tightness. It's so very important to keep an open mind and

understand all the options that are available. This allows us to meet the current demands of the market and building code, as well as provide better buildings for our clients and ourselves.

Knowing the options that are available both in technique and material are important aspects to achieving better and more airtight builds. Having an association like this, in which we can share and communicate this type of information to one another, is a vital way for our industry to grow and thrive. So, consider joining if you haven't already and certainly consider sharing some of your successes and failures at our conference or in our Newsletter.

There is much Knowledge for all of us to gain by Association!

Wood You Believe It? Tax Credits for the BC Wood Industry to Grow Green

Aria Hahn | aria@hellopocketed.io

The BC wood industry is rooted in growth, innovation, and sustainability—and now, there are new tax incentives to help you branch out even further. With the government rolling out clean economy tax credits, there's never been a better time to saw through red tape and carve out new opportunities in clean tech and sustainability. Here's a look at the programs that could have your business logging some serious benefits.

1. Carbon Capture Sequestration (CCS) ITC: Chipping Away at Emissions

This tax credit supports projects that capture, transport, store, or use CO2 emissions in industrial processes. While it's traditionally aimed at sectors like concrete and plastics, forward-thinking BC wood companies could explore innovative applications, such as carbon storage in wood-based materials.

Details:

- Available for expenditures from January 1, 2022, to December 31, 2040.
- Projects must operate for at least 20 years to qualify.
- Eligible uses include geological storage or producing concrete using captured CO2.

Examples of Eligible Projects:

1. Install carbon capture technology at logging and processing sites to store CO2 emissions from biomass energy systems.
2. Develop CO2-infused biochar from logging waste for use in agriculture or environmental remediation.
3. Partner with local concrete manufacturers to supply captured CO2 for low-carbon concrete production.

This is a chance to make wood products part of the solution by integrating carbon capture technologies into your processes.

2. Clean Technology Manufacturing (CTM) ITC: Planting the Seeds of Innovation

Looking to invest in greener machinery and equipment? The CTM ITC is tailor-made for companies acquiring clean technology property, perfect for the BC wood industry's focus on sustainable production.

Details:

- Refundable credit for property acquired between January 1, 2024, and December 31, 2034.
- Credit rates start at 30% in 2024 and decrease gradually until 2034.

Examples of Eligible Projects:

1. Upgrade sawmill equipment to high-efficiency, renewable-powered systems to reduce emissions.
2. Install automated systems to process logging by-products into wood pellets or bioenergy.
3. Adopt solar-powered conveyor and sorting systems to enhance sustainable lumber processing.

Whether it's upgrading to more efficient sawmill equipment or investing in renewable-powered manufacturing systems, this credit makes it easier to modernize while staying rooted in sustainability.

3. Clean Hydrogen ITC: Fueling the Future

For BC wood companies exploring the cutting edge, the Clean Hydrogen ITC supports projects that produce low-carbon hydrogen. Think beyond traditional wood products—this could include hydrogen-powered machinery or hydrogen-based energy systems integrated into wood processing.

Details:

- Applies to equipment acquired after March 28, 2023, and in use by December 31, 2034.
- Eligible for hydrogen production projects with carbon intensity below 4 kg CO₂e per kilogram.

Examples of Eligible Projects:

1. Transition internal trucking fleets at logging sites to hydrogen-powered vehicles.
2. Develop a hydrogen storage system to fuel machinery at remote logging and wood processing sites.
3. Use hydrogen-powered equipment for milling and debarking operations at logging facilities.

It's a golden opportunity to tap into clean energy solutions that align with sustainability goals.

4. Clean Technology (CT) ITC: Powering Progress

This tax credit helps businesses invest in equipment for renewable energy generation, like biomass or solar-powered systems. For BC's wood industry, this could mean energy-efficient kilns or bioenergy systems that turn wood waste into power.

Details:

- Refundable credit of up to 30% for property available before 2033, tapering to 15% in 2034.

Examples of Eligible Projects:

1. Install biomass energy systems to convert logging residues into renewable electricity for operations.
2. Deploy solar panels at log yards and processing sites to power sorting and milling equipment.
3. Implement a combined heat and power (CHP) system using wood waste to heat drying kilns and generate electricity.

With this credit, you can turn sustainable practices into measurable savings while strengthening your commitment to renewable energy.

Important to Note

- You can claim only one tax credit per property, but multiple credits can apply to different parts of the same project.
- Some programs require pre-approval, such as submitting a project plan to NRCan.
- Act fast—these opportunities have timelines that require planning ahead.

The BC wood industry has always been rooted in innovation, and these tax credits are the perfect tools to keep growing sustainably. From capturing carbon to investing in clean tech and exploring hydrogen, these programs let you branch out while keeping your business firmly grounded in environmental stewardship. Pocketed can help – hello@hellopocketed.io

4 Steps Employers Can Take to Reduce Winter Driving Risks

Gord Woodward | gwoodward@roadsafetyatwork.ca

Winter is Mother Nature's driving test for workers in the log and timber building sector who get behind the wheel on the job. As an employer, your job is to help ensure they pass the test.

What counts as work-related driving? Some examples are obvious, such as delivering logs, timber, tools, and construction materials to job sites. But don't overlook part time or even occasional driving. Any employee who travels to make site visits and inspections or see clients and attend supplier meetings is driving for work — even when using their own vehicle.

Here's why it matters: Vehicles used for work in BC are deemed workplaces, meaning you have legal responsibilities for employees and contractors in those vehicles.

In addition, driving may be the most dangerous thing your employees do at work, especially at this time of year. Crashes resulting in injury and time off work during November through January go up by 26% compared with other months, according to WorkSafeBC statistics for the last five years.

WorkSafeBC data also shows that workers injured in a vehicle-related crash are off the job for an average of 91 days. And the crashes are costly for employers. The average worker claim for a vehicle-related crash costs more than \$56,000, which can affect your WorkSafeBC rating and premium. Other related expenses can include higher vehicle insurance, repair bills, and the cost of hiring and training replacement staff.

Building winter road safety into your occupational health and safety plan can help reduce the risk.

Here are four steps from Road Safety at Work you can take to help reduce the risks.

Know your safety responsibilities and how to meet them

Download our [Winter Driving: What Employers Need to Know Guide](#). It explains steps you can take to comply with health and safety regulations at this time of year.

Identify winter hazards and assess risk

Use our [Winter Driving Risk Assessment Tool](#) to figure out the hazards your employees are most likely to face. The Excel spreadsheet then helps you assess the level of risk and suggests actions you can take to help protect drivers. You'll also be linked to resources you can use to implement your risk-reduction plans.

Some examples include:

- Ensure all vehicles used for work are maintained and equipped for winter driving (proper winter tires, an [emergency kit](#), winter wiper blades, etc.).
- Postpone or eliminate driving when conditions are poor. Use virtual meetings instead, if possible.
- Have drivers visit [DriveBC.ca](#) before travelling to check weather and road conditions.

Review winter driving safety with staff

Give clear direction about when driving is not recommended or allowed due to dangerous weather conditions, and ensure that employees are trained to identify and respond to these situations. Put your rules in writing and review them with employees. Supervise employees to make sure they're being met. Use our [Winter Driving Safety Policy and Procedures Template](#) to get started. It can be adapted to suit organizations of any size.

Train and educate drivers

All employees who drive as part of their job need winter driving orientation. Have them review our [Driving for the Conditions Tool Kit](#) and [Practical BC Winter Driving Tips](#) webinar. Use our [Winter Driving Safety Tailgate Meeting Guides](#), which cover eight topics and include practical tips you and your staff can use right away.

Visit [RoadSafetyatWork.ca](#) for more winter driving checklists, handouts, quizzes, and guides.

Checklist



Vehicle Emergency Kit

Drivers need to be prepared to deal with emergencies. Carry an emergency kit with supplies, tools, clothing, and other contents for a variety of weather and driving conditions. Print this checklist and keep a copy in all vehicles. Inspect the kit every six months to confirm all the contents are there and in good working condition. Check expiry dates on any perishable items.

1. Basic vehicle emergency kit

Gather and store these items in a sturdy, waterproof container or a zippered gear bag.

- Basic first aid kit with manual
- Booster cables
- Bottled water
- Fire extinguisher (ABC type)
- Flashlight with extra batteries or hand-crank flashlight/radio
- HELP/OK sign
- High-visibility apparel
- Non-perishable high energy foods (e.g., trail mix, granola bars)
- Reflective safety triangles
- Survival blanket
- Extra clothing (e.g. hat, gloves)
- Whistle

2. Additional items for winter driving or travel in remote locations

- Candles, waterproof matches, and candle holder
- Compass, maps, or GPS system
- Antifreeze, windshield de-icer
- Shovel
- Sleeping bag/warm blankets
- Sand, kitty litter, or traction mats
- Tire chains or other approved traction device
- Tools (tire wrench, screwdrivers, adjustable wrench, pliers, multi-function knife)
- Tow strap or rope
- Wheel chocks, spare tire
- Windshield scraper and snow brush
- Extra clothing (work gloves, toque, jacket, socks)

The information contained in this checklist is for educational purposes only. It is not intended to provide legal or other advice to you, and you should not rely upon the information to provide any such advice. We believe the information provided is accurate and complete; however, we do not provide any warranty, express or implied, of its accuracy or completeness. Neither WorkSafeBC, nor the Justice Institute of British Columbia nor Road Safety at Work shall be liable in any manner or to any extent for any direct, indirect, special, incidental or consequential damages, losses or expenses arising out of the use of this checklist. November 2023



BC LOG & TIMBER BUILDING INDUSTRY ASSOCIATION

28th ANNUAL AGM & CONFERENCE – March 6 - 9, 2025

Prestige Harbourfront Resort, Salmon Arm, BC

Register on or before January 30, 2025 for the 10% Early Bird Discount

Take advantage of early bird rates for both attendees and sponsors.

BC Log & Timber Building Industry Association
Phone: 250-545-5647 (LOGS) bcltbia@gmail.com



BCLTBIA Classified Ads and Notices



Diversity, Equity & Inclusion Workshop

Rumin Mann | rmann@bcwood.com

You will learn:

- What is psychological safety?
- Defining what inclusion means in our Wood Products industry
- What gets in the way? - Biases, privilege, ego obstacles, microaggressions, and micro-inequalities
- Definition of Bullying, Harassment, and Discrimination
- Legislation in BC
- The effects on the brain, on organizations, on teams, and on individuals involved
- Responsibilities and policy best practice
- Tips to dismantle discrimination and actions stemming from bias
- Combating barriers and detractors
 - Understanding emotional intelligence
 - Inclusion in practice and language
 - Cultural awareness

Date: Friday, January 17, 2025

Time: 12:00pm to 3:00pm

Location: Zoom

Cost: \$18 per person

Register: <https://bcwood.com/dei-workshop/>

HELP WANTED

Zirnhelt Timber Frames are builders of high-quality houses, cabins and cultural and community buildings. We use a system of timber frame with prefabricated panels.

We are a growing company focused on sustainable building utilizing concepts of efficiency, durability and healthy environments. We run projects from our shop in 150 Mile House and travel to sites from 150 Mile House and 100 Mile House (central and southern Cariboo). We strive to foster a unique work environment where team collaboration is strongly promoted. At Zirnhelt Timber Frames, sustainable building is considered a profession.

We are always interested in meeting people who have decided to make a career in sustainable building. Our greatest need is in carpentry, but many trades, designers, and project manager skills are in demand for our team too. Currently we are actively hiring for Lead, experienced and Apprentice carpenters for both 150 Mile House and 100 Mile House.

Visit our career page for more info and to apply:

www.ztframes.com/careers

Zirnhelt Timber Frames Ltd.

3031 Cariboo Hwy/Box 968

150 Mile House, V0K 2G0

Phone 250-296-3499

kelly@ZTFrames.com

www.ZTFrames.com



ADVERTISE HERE

Our Newsletters are a great way to connect with the best builders and suppliers for our industry.

Contact the Office for any Additional Information

bcltbia@gmail.com
250-545-5647 (LOGS)



Panabode Christmas Tree



REGISTER HERE

28th ANNUAL AGM & CONFERENCE

March 6 - 9, 2025

Prestige Harbourfront Resort,
Salmon Arm, BC

Contact the Office for any Additional Information
bcltbia@gmail.com
250-545-5647 (LOGS)

BCLTBIA Classified Ads and Notices

HELP WANTED

Project Manager/Designer

International Timberframes is a long established Timberframing company based in Golden, BC. We are committed to building with natural solid wood. We design, manufacture, engineer and build timberframe and 100% wood DLT mass timber.

About the position

We are looking to add a full-time Project Manager / Designer to our team.

The purpose of this role is to ensure accurate co-ordination of everything from estimate to invoice, liaising internally with staff at International Timberframes and externally with client, contractor, engineer, architect and 3rd parties as needed.

Location

This full-time position is based at our production facility in Donald, BC. Travel as required in BC and Alberta to client job sites for site surveys, meetings and on-boarding for installations

Benefits

We offer a competitive rate of pay, a 4-day week, 100% company covered comprehensive medical and dental benefits plan (incl your spouse and dependents if applicable) after 3 months with us, use of company vehicles for work purposes and fully funded training opportunities.

Key Duties and Responsibilities

Estimating

Job planning: project prioritization, time management and resource allocation Attend Client meetings, record project requirements or changes

Project coordination with client, contractor, 3rd parties to ensure clear and timely communication Produce shop and installation drawings as well as all required information for production and installation as per ITF processes

Produce Health and Safety required documentation as per ITF process

Guide and liaise with Lead Hand Timberframer and Production Manager before production, during

production and installation, should questions arise Control costs and progress of projects during production

Coordinate with Office Admin for invoicing

Remain up to date with relevant legislation - eg safety and building laws

Requirements

We would love to hear from you if you can offer us the following skills and experience: Minimum 3 years experience in the timber framing or log building industry

Minimum 1 year experience as a project manager or CAD designer Minimum 1 year of experience working with the software Cadwork Familiar with Google workspace

Familiarity with timberframe joinery and structural systems

Need to be willing to travel as required

Ability to juggle between projects

Ability to work alone on assigned tasks and together as part of a cohesive team Demonstrated commitment to exceptional standards of work

A full clean driving license

Canadian Citizen or Valid Work Permit for a minimum of 2 years

Strong assets

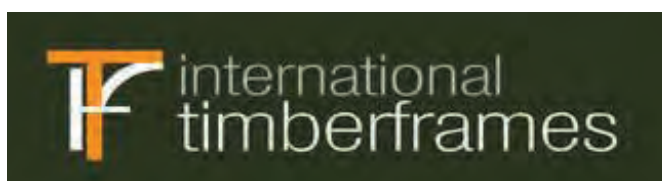
2 years of timberframing experience Willing to be part of the full installations

Compensation

\$28.00-\$36.00/per hour depending on experience and references.

How to apply

Please send a cover letter and resume expressing your interest, including salary expectations, to employment@itimerf.com



BCLTBIA Resource Section

Cariboo Wood Innovation Training Hub

Stephanie Huska | CWITH.WL@outlook.com

The initial development of a unique project, a Wood Innovation Training Hub has started in Williams Lake. This project is being funded by a grant through the Rural Economic Diversification and Infrastructure Program, distributed through the Fraser Basin Council. Partners to the project include the Cariboo Regional District, the City of Williams Lake, and University of British Columbia Alex Fraser Research Forest.

A result of discussions starting in 2018, this hub will support diversification in the local forest economy, as well as supporting high quality, value-added sustainable manufacturing. Williams Lake is an ideal area to create an innovation hub for development of skilled workers to expand and support the log and timber home builders, as well as other value-added producers.

Email CWITH.WL@outlook.com for updates and to be put on the newsletter mailing list.

Westrend Develops Successful Programs with Log Home & Timberframe Industry

info@westrend.ca

Are you maximizing your margins potential? We supply timbers, T&G patterns, siding and trims in raw or prefinished.

Please view our presentation to see how we may be able to help you with a proven “value added” program.

A link to this Powerpoint can be found at: <https://bclogandtimberbuilders.com/resources>

DEADLINE FOR NEWSLETTER

Contributions and advertising DEADLINE for next issue is March 1, 2025

BCLTBIA office at bcltbia@gmail.com – or 250-545-5647 (LOGS)

Joinery at its Finest

Get involved; join a BCLTBIA Committee. Let the office know if you are interested and we can connect you with the Committee Chair. Together, we create change and a voice for our industry.

Building Code, Energy and Carbon

Chair: Kelly Marciniw

Advocating for industry and educating members on current and future building code requirements, including energy efficiency and upfront/embodyed carbon emissions.

Education

Chair: Maik Gehloff

Advancing education and professional development for our members’ staff and owners, including engaging with the BC Wood / Ministry of Post Secondary Education and Future Skills on the Wood Value Add Workforce Development project.

Fibre

Chair: Sam Zirnhelt

Connecting the log and timber sector to high quality fibre through engagement with and advocacy to BCTS, community forests, wood lots and other BC sources.

Procurement and Payments

Chair: Sigi Liebmann

Advocating for members (with their typical prefabricated / offsite built build systems) to have comparable terms when navigating government and institutional procurement and clients’ financing (mortgages).

Insurance and Risk

Chair: Sam Zirnhelt

Educating members on insurance, and promoting informed risk taking to help their businesses.

Health and Safety

Chair: Peter Sperlich

Working in conjunction with WorkSafeBC to ensure our Health and Safety Template meets the needs of our members and is current.



ZIRNHELT
Timber Frames

COMPLETE CUSTOM BUILDS,
LOCKUP OR
TIMBER FRAME PACKAGES

CONTACT US
WWW.ZTFRAMES.COM | 250-296-3499 | INFO@ZTFRAMES.COM



Gehloff
Consulting Inc.

mgehloff@gehloff-consulting.com



Dürfeld Log & Timber
Elevating the Beauty of Nature

Specializing in Handcrafted Post & Beam Construction

www.durfeldlogandtimber.com | 250 398 0041 | info@durfeldlogandtimber.com



SITKA LOG HOMES

info@sitkaloghomes.com

SITKALOGHOMES.COM



Sperlich Log Construction Inc. /
Canadian Pride Log & Timber Products

Assembly Crew & Equipment
Available

Call for Details
Peter 250 718 0090 or
Andrew 250 306 5814



WOOD FINISHING PRODUCTS
NORSELOGHOMES.COM/SHOP

NORSE LOG HOMES
RESIDENTIAL - RECREATIONAL - COMMERCIAL

ADVERTISE HERE

Contact the Office
for any Additional Information

bcltbia@gmail.com
250-545-5647 (LOGS)



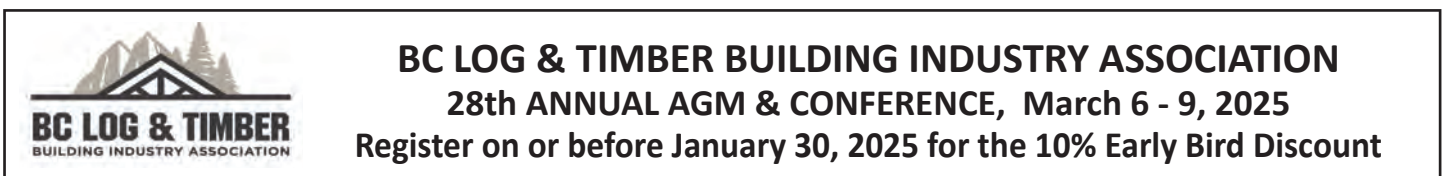
BRIDGEWOOD
ENGINEERING SERVICES

- ✓ Residential Engineering
- ✓ Architectural Design
- ✓ Structural Analysis
- ✓ Construction Documentation
- ✓ Structural Inspections, Assessments, & Site Analysis
- ✓ Project Management & Coordination

Plan, Execute, Build

Call Now 1.877.910.3114 info@bridgewoodengineeringservices.com

BridgewoodEngineeringServices.com



BC LOG & TIMBER
BUILDING INDUSTRY ASSOCIATION

BC LOG & TIMBER BUILDING INDUSTRY ASSOCIATION
28th ANNUAL AGM & CONFERENCE, March 6 - 9, 2025
Register on or before January 30, 2025 for the 10% Early Bird Discount



Westrend is a Proud Sponsor of the
BC Log and Timber Association



Specializing in
Soffit & Ceiling Lining | Timbers | Exterior Siding

CALL US AT 1-877-656-7445 OR VISIT WESTREND.CA
TWO LOCATIONS TO SERVE YOU: LANGLEY | CALGARY